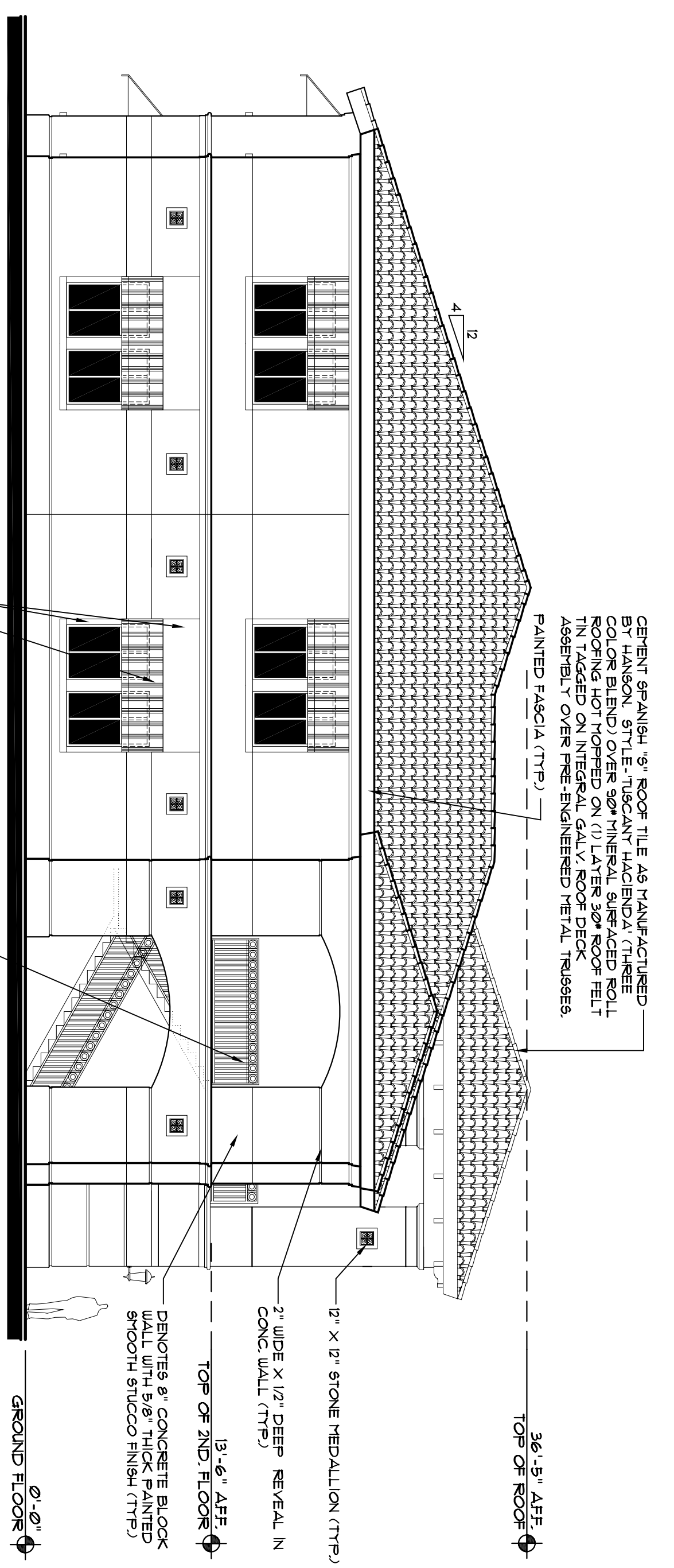


SOUTH ELEVATION
SCALE: 1/8" = 1'-0"

NOTE:
ALL WINDOWS AND STOREFRONT DOORS TO HAVE DADE COUNTY APPROVED IMPACT RESISTED GLASS AND ALUMINUM FRAME W/ FACTORY APPLIED KYNAR 500 PAINT FINISH. COLOR SUPER WHITE.

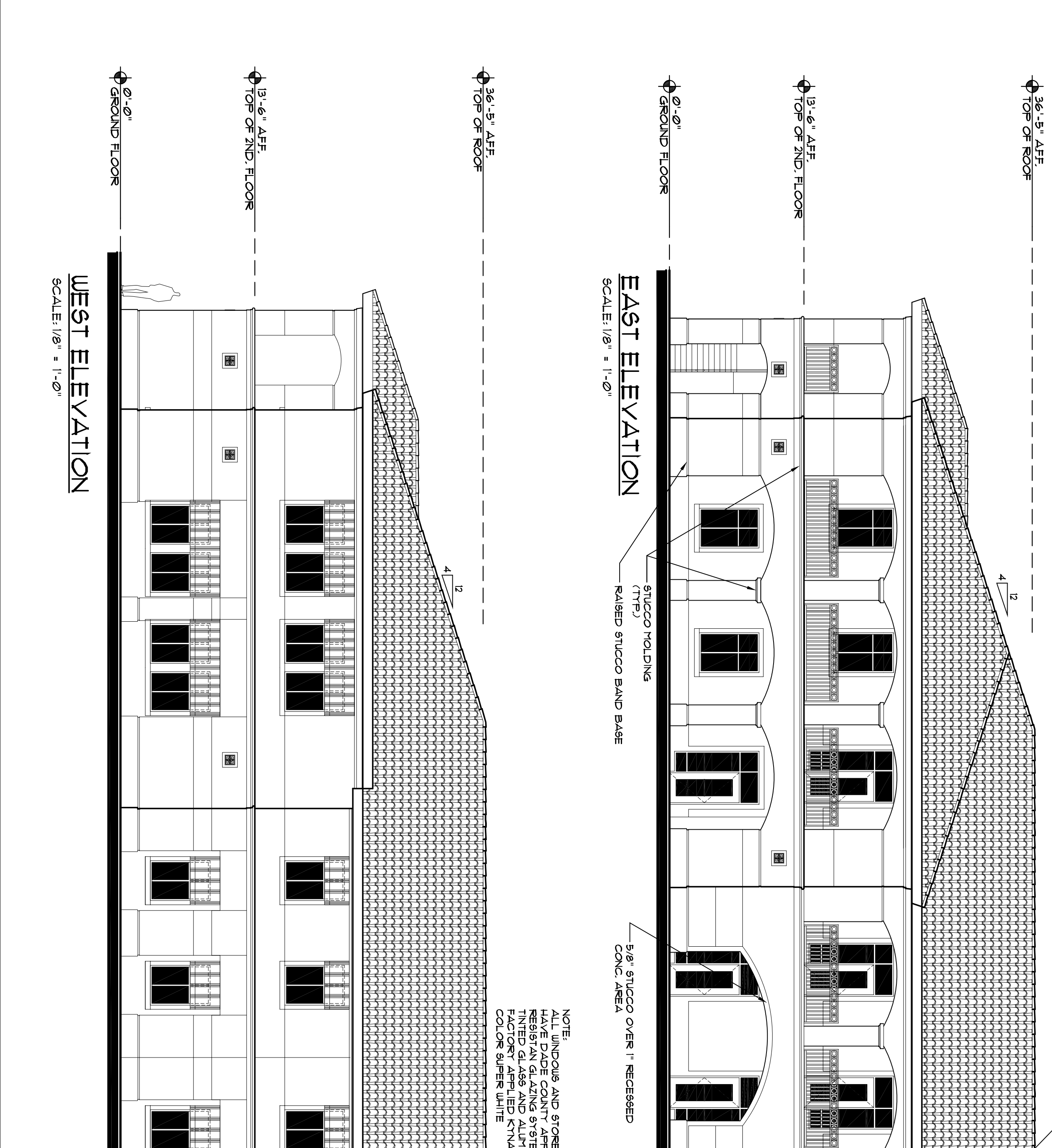
NOTE:
ALL WINDOWS AND STOREFRONT DOORS TO HAVE DADE COUNTY APPROVED IMPACT RESISTED GLASS AND ALUMINUM FRAME W/ FACTORY APPLIED KYNAR 500 PAINT FINISH. COLOR SUPER WHITE.



NORTH ELEVATION
SCALE: 1/8" = 1'-0"

NOTE:
ALL WINDOWS AND STOREFRONT DOORS TO HAVE DADE COUNTY APPROVED IMPACT RESISTED GLASS AND ALUMINUM FRAME W/ FACTORY APPLIED KYNAR 500 PAINT FINISH. COLOR SUPER WHITE.

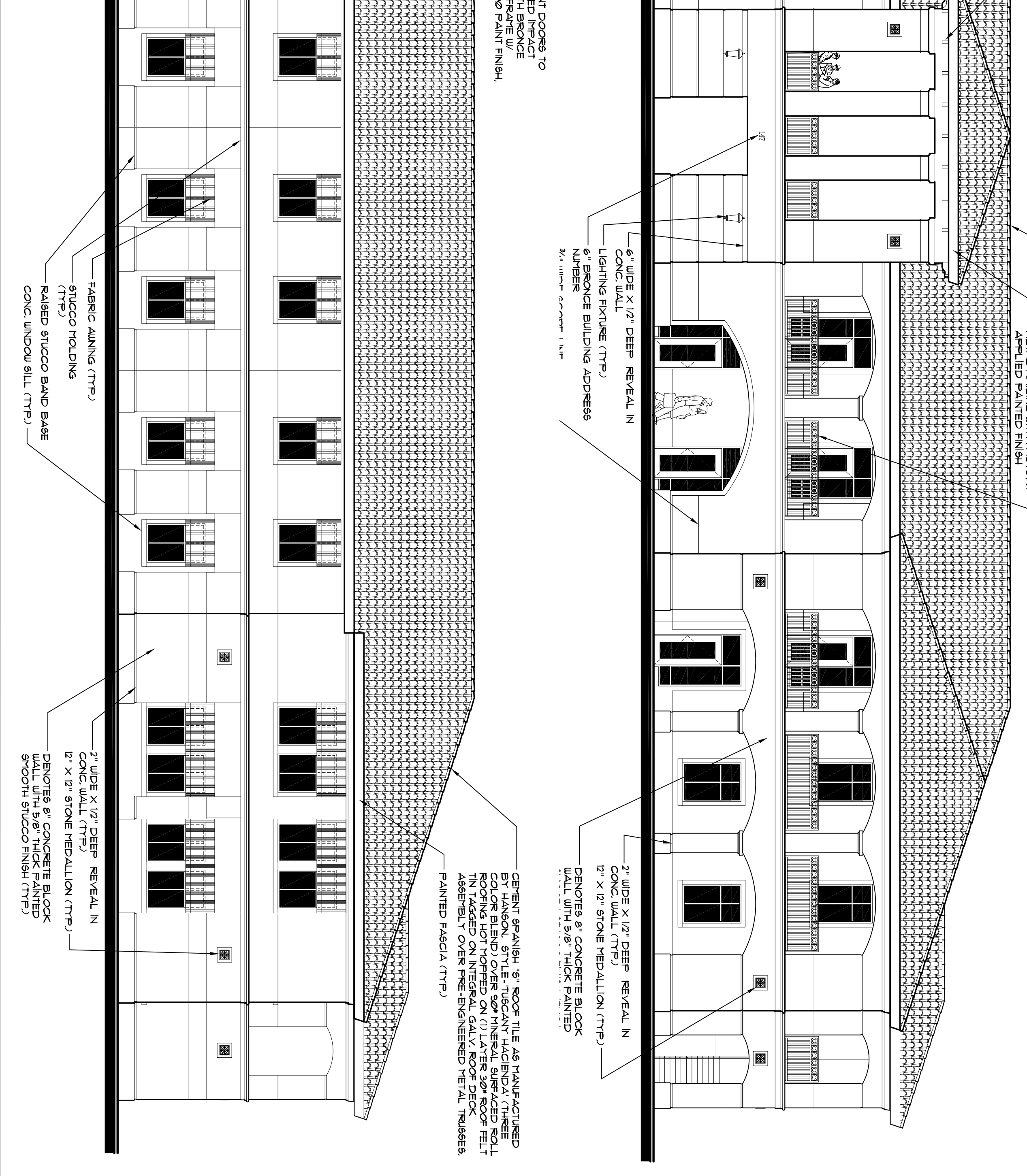
NOTE:
ALL WINDOWS AND STOREFRONT DOORS TO HAVE DADE COUNTY APPROVED IMPACT RESISTED GLASS AND ALUMINUM FRAME W/ FACTORY APPLIED KYNAR 500 PAINT FINISH. COLOR SUPER WHITE.



EAST ELEVATION
SCALE: 1/8" = 1'-0"

NOTE:
ALL WINDOWS AND STOREFRONT DOORS TO HAVE DADE COUNTY APPROVED IMPACT RESISTED GLASS AND ALUMINUM FRAME W/ FACTORY APPLIED KYNAR 500 PAINT FINISH. COLOR SUPER WHITE.

NOTE:
ALL WINDOWS AND STOREFRONT DOORS TO HAVE DADE COUNTY APPROVED IMPACT RESISTED GLASS AND ALUMINUM FRAME W/ FACTORY APPLIED KYNAR 500 PAINT FINISH. COLOR SUPER WHITE.



WEST ELEVATION
SCALE: 1/8" = 1'-0"

NOTE:
ALL WINDOWS AND STOREFRONT DOORS TO HAVE DADE COUNTY APPROVED IMPACT RESISTED GLASS AND ALUMINUM FRAME W/ FACTORY APPLIED KYNAR 500 PAINT FINISH. COLOR SUPER WHITE.

NOTE:
ALL WINDOWS AND STOREFRONT DOORS TO HAVE DADE COUNTY APPROVED IMPACT RESISTED GLASS AND ALUMINUM FRAME W/ FACTORY APPLIED KYNAR 500 PAINT FINISH. COLOR SUPER WHITE.