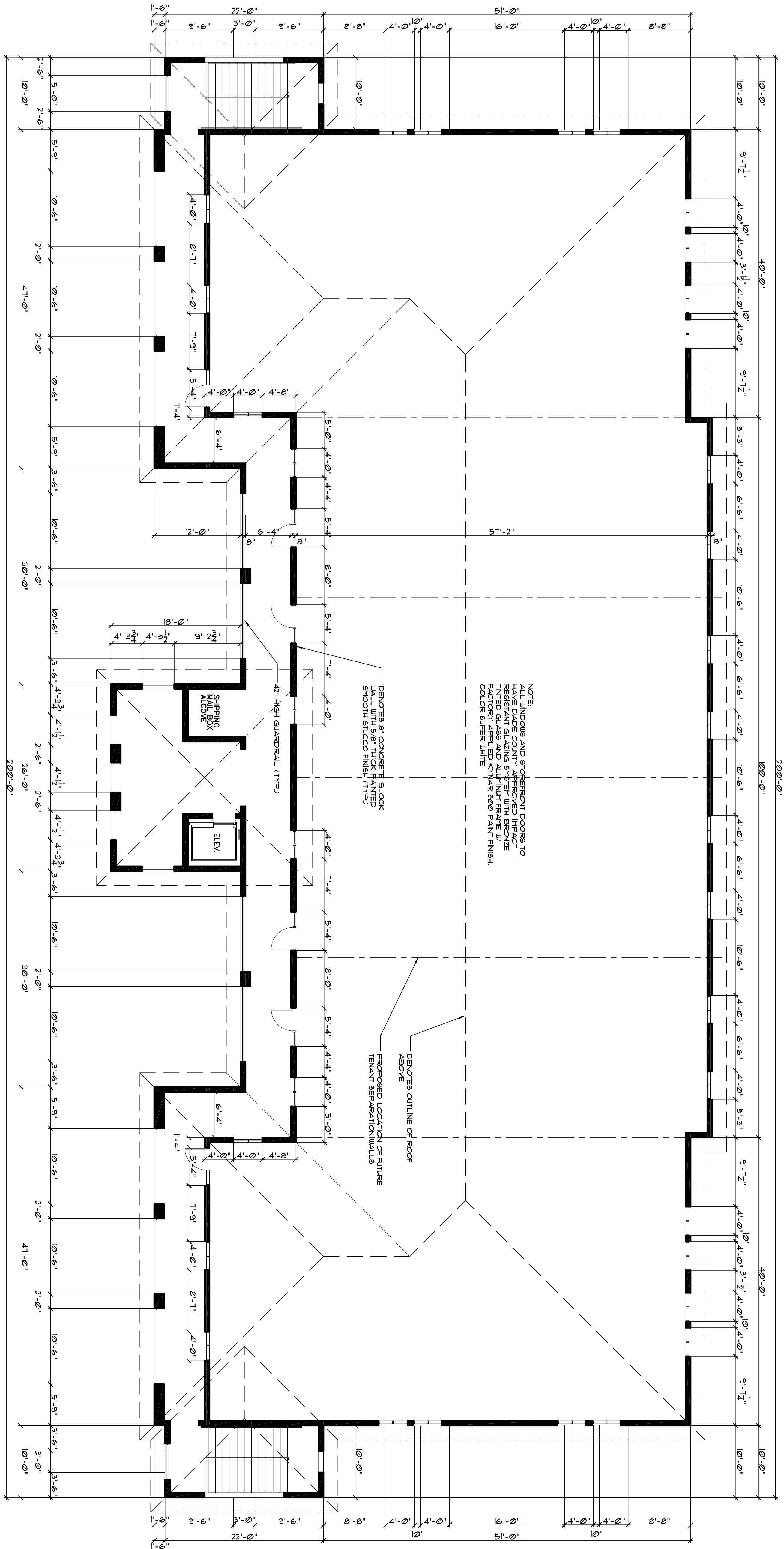




**SECOND FLOOR PLAN**  
SCALE: 1/8" = 1'-0"



NOTE:  
ALL WINDOWS AND STOREFRONT DOORS TO HAVE DADE COUNTY APPROVED IMPACT RESISTANT GLASSING SYSTEM WITH BRONZE FACTORY APPLIED KNIFE EDGE PAINT FINISH COLOR SUPER WHITE

DENOTES 8" CONCRETE BLOCK WALL WITH 5/8" THICK PAINTED SMOOTH STUCCO FINISH (TYP)

DENOTES OUTLINE OF ROOF ABOVE PROPOSED LOCATION OF FUTURE TENANT SEPARATION WALLS

**REVISIONS:**

COPYRIGHT © CORRALES GROUP ARCHITECTS, P.A. ALL RIGHTS RESERVED. THIS DOCUMENT IS THE PROPERTY OF CORRALES GROUP ARCHITECTS, P.A. ACCORDING TO THE TERMS OF THE CONTRACT. ANY REVISIONS OR CHANGES TO THIS DOCUMENT SHALL BE MADE EXCEPT FOR THE ORIGINAL DESIGN. THE ARCHITECT SHALL BE RESPONSIBLE FOR THE ACCURACY OF THE INFORMATION PROVIDED HEREIN. THE ARCHITECT SHALL BE RESPONSIBLE FOR THE ACCURACY OF THE INFORMATION PROVIDED HEREIN. THE ARCHITECT SHALL BE RESPONSIBLE FOR THE ACCURACY OF THE INFORMATION PROVIDED HEREIN.

PETER CORRALES  
LICENSE NO. AA-000923

|                            |                    |
|----------------------------|--------------------|
| Drawn by                   | Proj. Mgr.         |
| M.U.                       | M.U.               |
| File: TOWER/<br>WELLINGTON | Job. Capt.<br>M.U. |

|              |                   |   |
|--------------|-------------------|---|
| Sheet No.    | SHEET TITLE       | Project   |
| A-6          | FLOOR PLAN        | PROFESSIONAL CENTER AT WELLINGTON<br>IN<br>VILLAGE OF WELLINGTON, FLORIDA<br>FOR<br>THE TOWER GROUP |
| Sheet 6 of 9 | Project No. 06020 | Date 02-10-06   |

corrales group architects  
2300 corporate blvd. n.w., suite 145  
boca raton, florida 33431 (561) 995-6700  
corporation no. AA-0002919  
architect no. AR-0009125